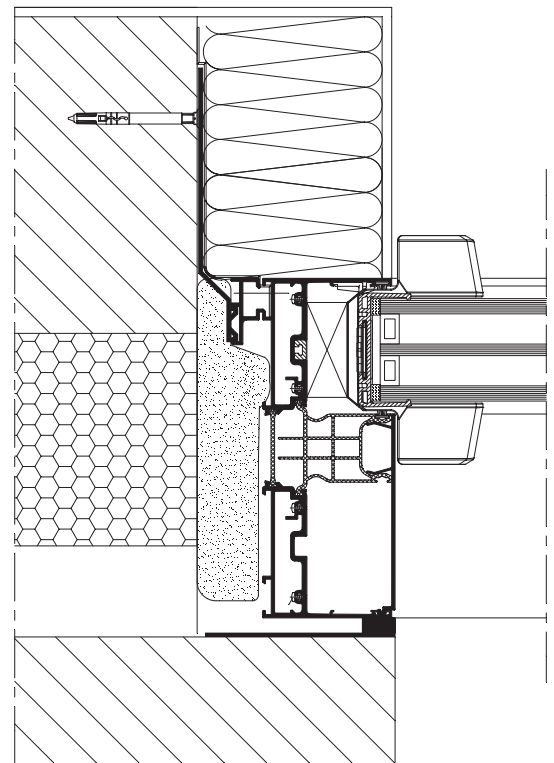
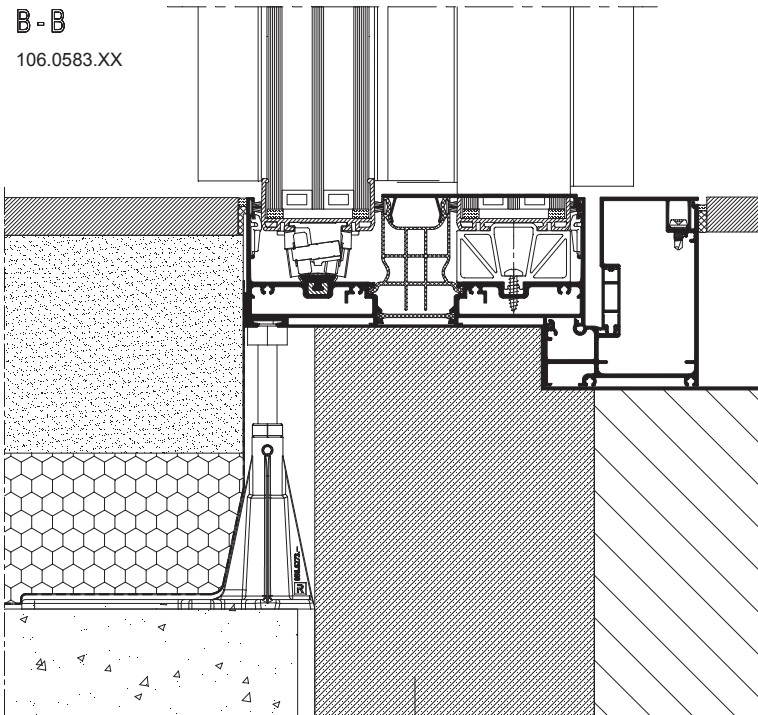


A - A



B - B

106.0583.XX



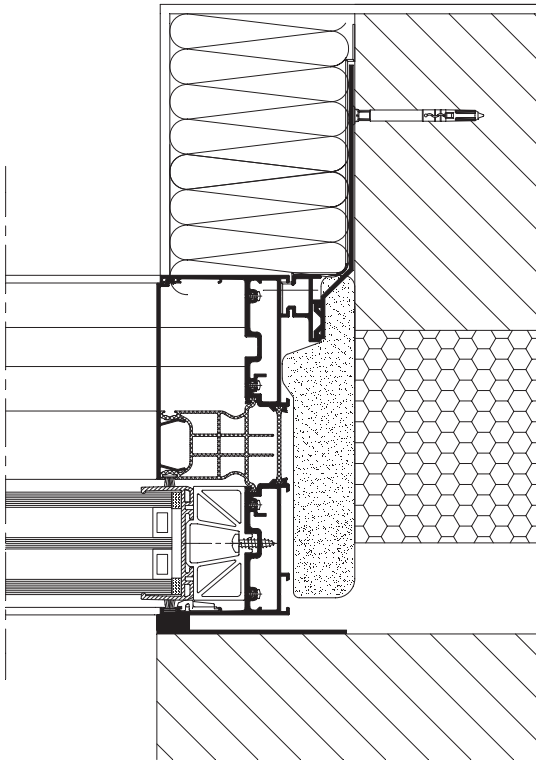
			#	L_m	
106.0083.17			1	B - 140	25D.C. ...
106.0090.XX			1	B - 140	25D.C. ...
034.0420.XX			1/500mm	50	25D.C. ...

		#	
080.9381.04		B	25D.G. ...
062.9290.17		2	25D.G. ...
052.5300.--		8	25D.G. ...
021.5169.--		1/800mm	25D.G. ...

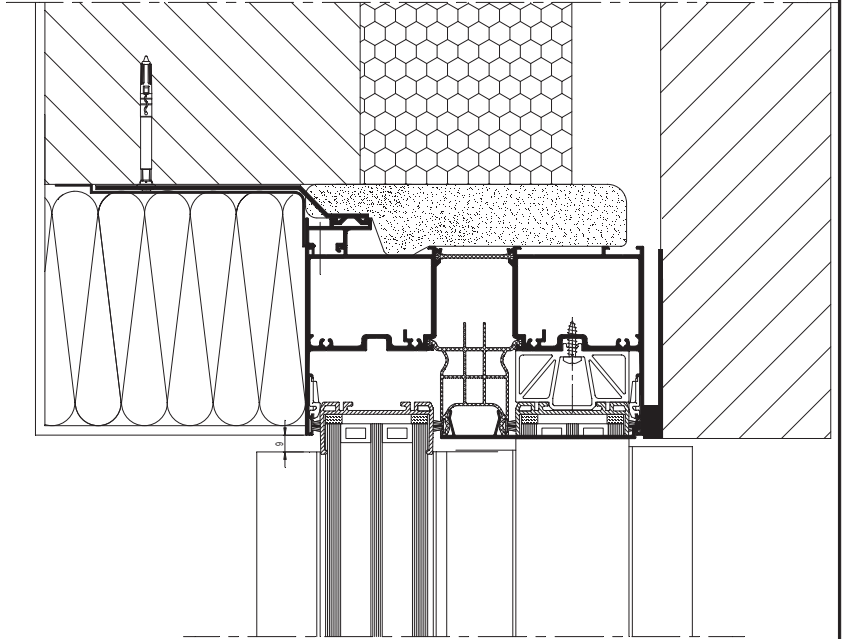


DRUKVASTE ISOLERENDE STEENLAAG
ASSISE ISOLANTE ET RÉSISTANTE À LA COMPRESSION
COMPRESSION-RESISTANT INSULATING LAYER OF STONES
DRUCKFESTE ISOLIERENDE BACKSTEINSCHICHT

A-A

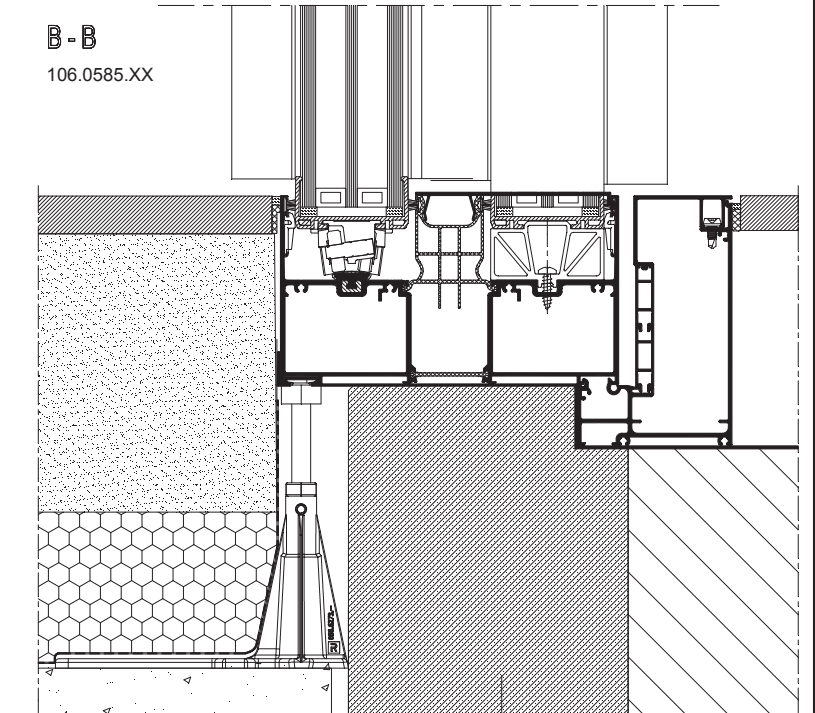


B-B



B-B

106.0585.XX

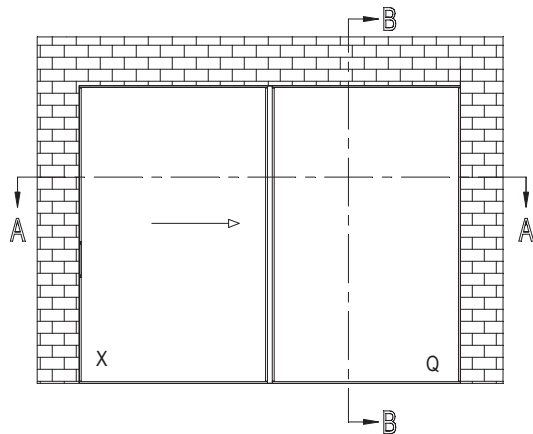


			#	Lm	
106.0085.17			1	B - 140	25D.C. ...
106.0090.XX			1	B - 140	25D.C. ...
034.0420.XX			2/500mm	50	25D.C. ...

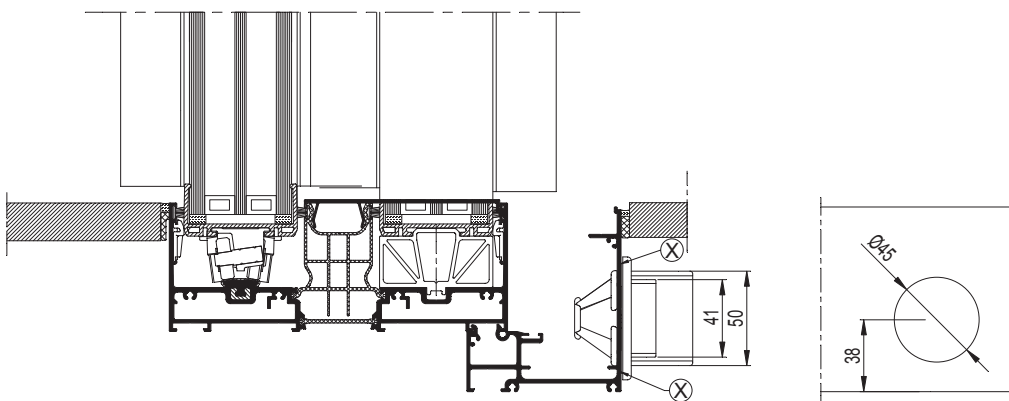
		#	
080.9381.04		B	25D.G. ...
062.9291.17		2	25D.G. ...
052.5300.--		8	25D.G. ...
021.5169.--		1/800mm	25D.G. ...

F

D0096135



B - B



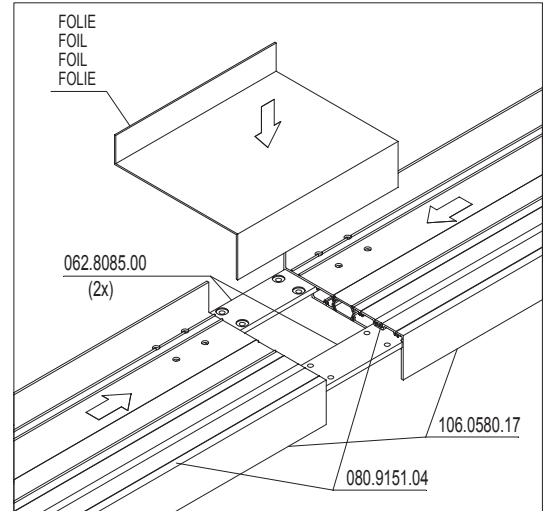
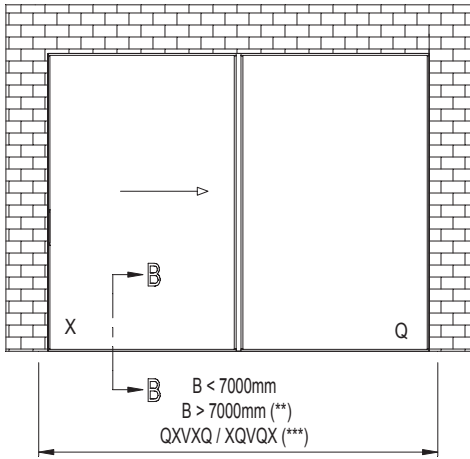
106.0583.XX
 106.0585.XX

062.9290.17
 062.9291.17

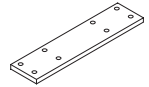
106.0083.17
 106.0085.17

071.6906.07

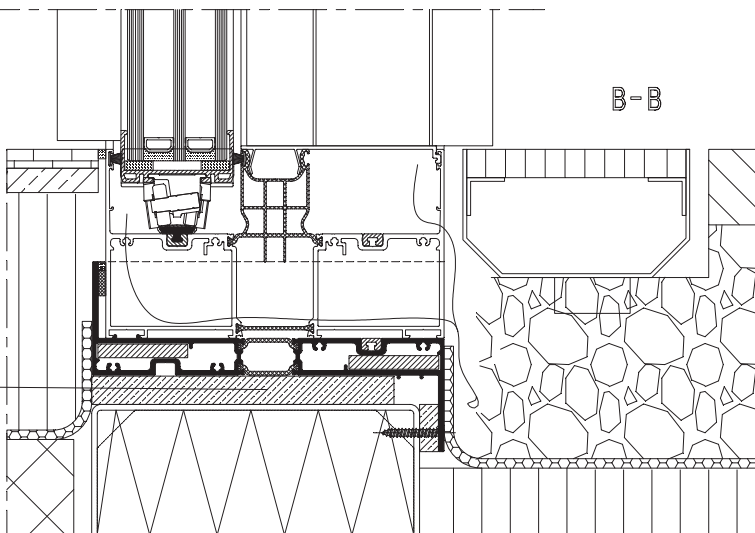
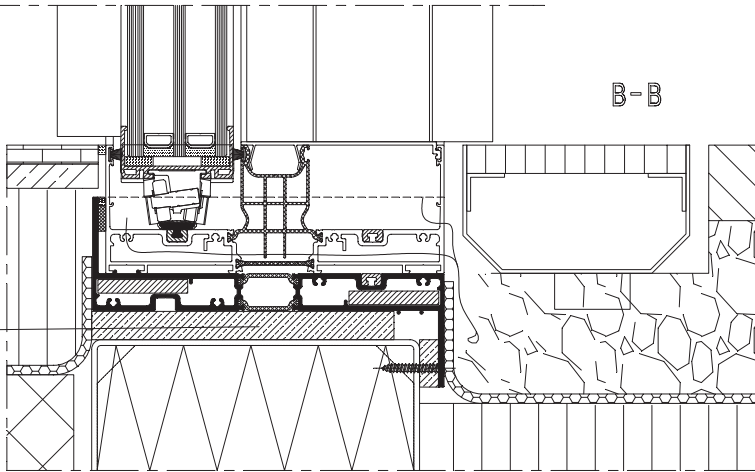
(X) DICHTINGSMIDDEL
 MATIERE D'ETANCHEITE
 SEALING AGENT
 ABDICHTUNG



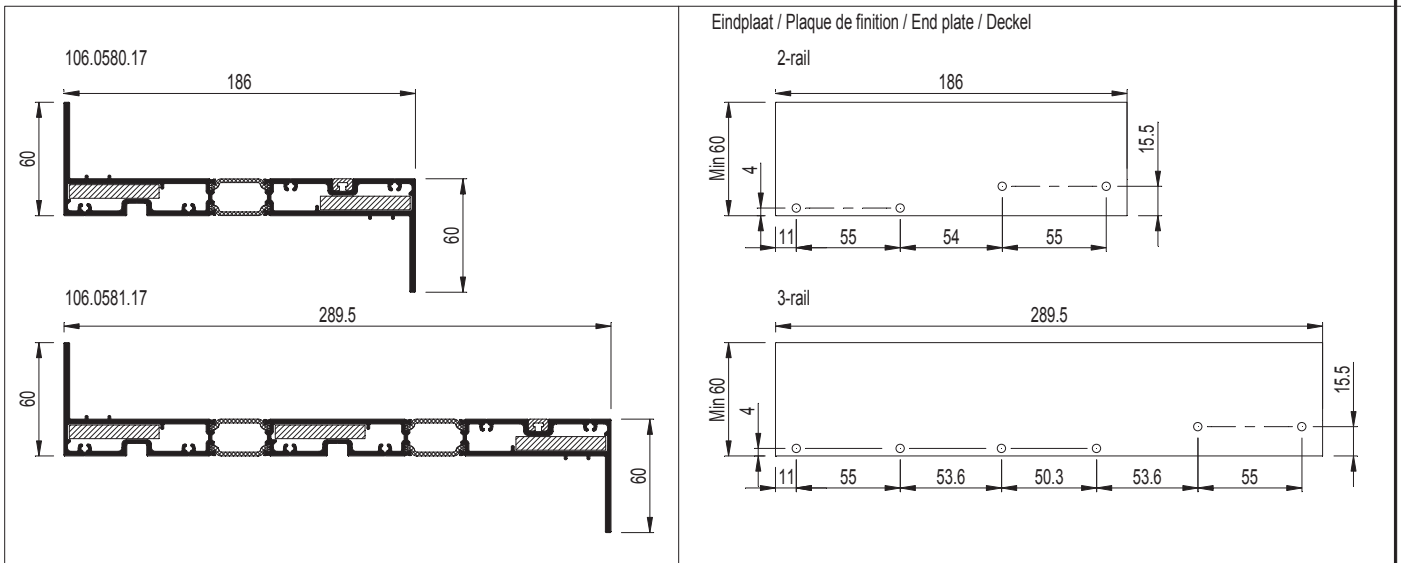
(**) 106.0580/1 --> 062.8085.00



(***) 106.0580/1 --> 062.8087.00



! DRUKVASTE ISOLERENDE LAAG
 ASSISE ISOLANTE ET RÉISTANTE À LA COMPRESSION
 COMPRESSION-RESISTANT INSULATING LAYER
 DRUCKFESTE ISOLIERENDE UNTERLAGE



			#		
106.0580.17 (*)			1	B	25D.C. ...

(*) 106.0583 / 106.0585 → 106.0580
106.0599 / 106.0600 → 106.0581

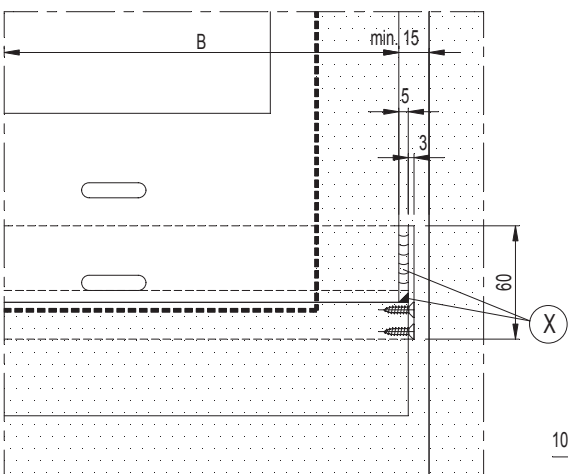
		#	
080.9151.04		B	25D.G. ...

Variante

			#		
106.0580.17 (*)			1	B + 10	25D.C. ...

(*) 106.0583 / 106.0585 → 106.0580
106.0599 / 106.0600 → 106.0581

		#	
080.9151.04		B + 10	25D.G. ...



(X) DICTINGSMIDDEL
MATIERE D'ETANCHEITE
SEALING AGENT
ABDICHTUNG

FOLIE
FOIL
FOIL
FOIL

